

2024 PARADE OF

HOMES

FLATHEAD BUILDING ASSOCIATION



Friday, Sept. 13 • VIP Tour & Awards

Saturday, Sept. 14 • 10 a.m. to 6 p.m.

BuildingFlathead.com/parade-of-homes

FLATHEAD
BUILDING
Association



SLITERS
LUMBER & BUILDING SUPPLY



Stockman Bank



OUTPERFORM TODAY. TRANSFORM TOMORROW.



Every day our team of professionals is driven to be the best and deliver for our customers. We're on a mission to develop next-generation solutions that accelerate, optimize and transform the homebuilding industry.

41 W Reserve Dr • Kalispell, MT • 406.752.9663

[BLDR.COM](https://www.blDR.com)



glacier steel products
R O O F I N G & S I D I N G

139 Alder Dr Kalispell MT 59901 - 406-892-7525 - glaciersteel.com

CONSIDERING THE VALUE AND DURABILITY OF METAL ROOFING OR SIDING?



COME VISIT OUR FACILITY AND SHOWROOM
WHERE YOU CAN SEE ALL THE OPTIONS AVAILABLE.



Legendary Finishes is northwest Montana's foremost supplier of luxury custom prefinished siding, doors, and millwork. Our unique business model has been delivering exemplary finishes to homes and businesses across the valley for over 20 years. With the finest materials available, we guarantee the best quality and most prestigious products on the market. Our process from beginning to end is fully customizable and truly individualized. If your goal is to build an estate that inspires both respect and admiration, there is no other choice than to use Legendary Finishes.

In addition to our pre-finished products, take advantage of our world class painting services. When it comes to the finish of your home, our goal is to make the process as simple as possible. By supplying an array of products and services, Legendary Finishes becomes your "one-stop-shop" for the entire finish of your home; both inside and out. To fully experience the capabilities and quality of our services, please stop by our showroom or visit our website and social media. Our highly experienced team would be thrilled to show you what makes us Legendary.



LEGENDARY
FINISHES
INC.



406-756-5463

Scan here to learn more!



legendarydoors.com @legendaryfinishesinc

PARADE OF HOMES SPONSORS

Title Sponsors and Co-Hosts



Grand Prize Sponsor



Premier Awards Night Sponsor



VIP Awards Night Sponsors



VIP Bus Tour Sponsors



Judging Sponsor



Transportation Sponsor



Videography Sponsor



2024 PARADE OF HOMES

FLATHEAD BUILDING ASSOCIATION

WELCOME

If you have joined The Parade of Homes before then you know the extraordinary experience the Flathead Builders Association has in store for you! We have not held a Parade of Homes since 2019, and if this year is your first chance to join us, you will be delighted because we are showcasing 10 of the most desirable homes the Flathead Valley has to offer. These homes feature a wide variety of designs from rustic to contemporary and from starter home to dream home. There are homes to be enjoyed in Lakeside, Whitefish, Bigfork and Kalispell—all in especially scenic locations including mountain retreats, quiet woods, stunning views, and more!

The parade offers the unique opportunity to tour these beautiful homes and talk with the builders, their staff, and their suppliers for a truly interactive and informative experience. Whether you're ready to build or still searching for ideas, you can meet the people who can transform your dreams into reality. But there is only one Parade of Homes Day—so don't miss it!

This year's Parade of Homes showcases the cutting-edge trends in cabinetry, finishes, flooring and technology. Discover these breathtaking homes and find inspiration for your next home build or remodeling project.

Thank you to Stockman Bank and Sliter's Lumber and Building Supply for once again partnering with the Flathead Building Association to host this widely

acclaimed tour of the finest homes in the Flathead Valley. Their continued support is an integral part of what makes our Parade of Homes event an amazing and inspiring experience for all who attend. And thank you to the Whitefish Credit Union for once again sponsoring the Grand Prize – a \$1,000 shopping spree at the FBA member of your choice!

We also want to thank our Parade builders and their teams who have created these extraordinary homes and make themselves available to meet with our guests during the Parade. Congratulations on another successful year to the Parade Committee, The Daily Interlake staff, the Flathead Building Association staff, and our other local sponsors and partners who are committed each year to creating and promoting a Parade event that will leave our guests inspired!

There is something for everyone to enjoy as you tour these fabulous homes and this year, there will be a VIP Bus Tour night and only one day to enjoy the houses, so reserve your space now so you don't miss a thing.

We will see you there!



Rocheal Gaston
*Parade of Homes
Committee Chair*



COMMITTEE

Rocheal Gaston (Chair)
Direct Source Cabinets

Kristen Hook
First Montana Bank

Miles Terry
Terry Homes

Adriena Daunt
Daunt Designs

Bryon O'Reilly
Moving Montana

Holly Foreman
Keller Supply

Blake Robinson
Glacier Bank

Blake Maynard
Builders FirstSource

Jason Gerbozy
J. Martin Builders

Patti Nelson
Insured Titles

Trevor Gnauck
Freedom Bank

Karen Wilde
Fathom Realty

Tyler Clark
Keller Williams Realty NWMT

Barry Conger
US Bank

Nicole Bishop
Flathead Premier Title

Tiffany Suhr
Young Bucks Irrigation

Carmon McCulley
Northwest Drywall & Roofing, Inc



YOUR SUN-DRENCHED SANCTUARY AWAITS

Travis McDowell - 406-250-7508
100 Columbia Mountain Dr. Columbia Falls, MT 59912 | Open by Appt.

www.SierraPacificWindows.com | 800-824-7744 | A Division of



Scan to see more amazing projects from Sierra Pacific Windows

TICKETING OUTLETS

Discount tickets are available **ONLY** at these walk-in ticket outlet locations for \$15.

Tickets available day of event at each Parade Home for \$20.

Each ticket admits one adult and two children under 16.

Bigfork

Glacier Bank

8251 Montana Hwy 35
406-837-5980

Sliters

8050 MT Hwy 35
406-857-3306

Stockman Bank

8165 Montana HWY 35
(406) 751-7060

Columbia Falls

Glacier Bank

822 Nucleus Ave
406-892-7100

Super 1

2100 9th St W
406-892-9996

Kalispell

Builders FirstSource

41 W Reserve Dr
406-752-9663

Direct Source Cabinets

160 Kelly Rd
406-728-8099

Fidelity National Title

150 1st Ave West N Ste A
406-755-7004

First Montana Bank

85 N Main St
406-751-1731

Flathead Building Association

40 2nd St E Ste 202
406-752-2422

Glacier Bank – Buffalo Hills

49 Commons Loop
406-756-4200

Glacier Bank - Main

202 S Main St
406-756-4200

Stockman Bank

1 S Main St.
(406) 300-7800

Stockman Bank

1825 US HWY 93 Ste. F
(406) 300-7830

Stockman Bank

2405 US-93 N
(406) 751-5070

Super 1 - Evergreen

1346 Highway 2
406-752-3631

Super 1 – Kalispell

55 1st Ave E
406-755-3144

Three Rivers Bank

233 E Idaho
406-755-4271

Three Rivers Bank

552 N Meridian
406-755-5432

Lakeside

Glacier Bank

7100 US 93
406-758-4800

Sliters

106 Stoner Loop
406-844-2442

Somers

Sliters

55 Somers Rd
406-857-3306

Whitefish

Fidelity National Title

284 Flathead Ave Ste 101
406-862-7914

Glacier Bank – Main

319 2nd E St
406-863-6300

Glacier Bank – South

6195 US 93 S
406-758-4850

Stockman Bank

6588 HWY 93 S
(406) 863-7900

Super 1

6475 Hwy 93 S
406-862-2222

Three Rivers Bank

6329 US 93 S
406-862-2233



Create solutions perfect for real life.

You deserve tailor-made solutions, unique to every room in your home. With Pella® Lifestyle Series, pick and choose the right features, options and innovations to make solutions that fit your life, room by room. Available performance solutions offer an unbeatable combination of energy efficiency, sound control and value.*



www.pellaMT.com

Pella Window & Door Showroom
1825 Hwy 93 S, Kalispell, MT
406-257-1516

* Performance solutions require upgrades to triple-pane, AdvancedComfort Low-E and mixed glass thickness. Based on comparing product quotes and published STC/OITC and U-Factor ratings of leading national wood window and patio door brands.

2024 PARADE OF HOMES

FLATHEAD BUILDING ASSOCIATION

WHAT TO KNOW BEFORE YOU GO

Each Parade home is meant to be viewed and enjoyed. It's important to keep all of that stunning craftsmanship pristine and protected along the way. You can help by observing the following:

Parking and Neighborhoods

Consider where and how you park, be sensitive to noise, and walk on pavement, sidewalks or designated travel routes. Signs will direct you to areas for parking. Please be courteous and considerate at all times.

Accessibility

As many of these homes are custom built and occupied by the buyers, the FBA does not require that they be made handicap accessible specifically for this event, therefore, most are not. Where possible, accommodations have been made to provide a shuttle or cart to transport attendees if it is foreseen that navigating a steep or very long driveway might present an obstacle to some. This shuttle service is at the expense and discretion of the builders and is not available at every home. We apologize in advance for any inconvenience this may cause for our mobility-challenged guests.

Admission

Attendees will be admitted during official Parade hours with a purchased ticket. The Flathead Building Association reserves the right to refuse admission to the Parade or parts of the Parade to any person, or to require a person already admitted to leave.

Bags and Parcels

You may be asked by Parade of Homes staff not to take a bag, case, or parcel into a home. Inspections of such items may be requested at any time. Representatives reserve the right to deal with any unattended item as they see fit and will accept no liability for any consequential damage.

Booties

Please keep your booties to use throughout the event! Booties will be provided to you at the first home you choose to tour. Shoes must be removed, and booties worn over your socks each time you enter a home and removed as you leave. Please hold onto your booties and reuse them as often as you can throughout all the homes you tour. In an effort to reduce waste, we kindly ask that you not take a pair of fresh booties at each home (unless your booties become torn or not clean for use in touring a home). If you need a special exception for medical reasons to not wear booties, please let the Ticket Table Attendant know and a special request will be made to the Builder. A place to leave your shoes will be provided near the entrance to the home. The FBA bears no liability for missing shoes. If you are concerned about the safety of your shoes, please bring a plastic bag to carry them.

Use of Mobile Phones

Please turn down your phone and do not conduct conversations when inside the homes. Usage of mobile phones should be limited to scanning of your mobile ticket on your smartphone at entrance, driveways and outside the homes.

Photographs

Each home is owned by someone. Please look for signs allowing photos or ask permission before taking pictures.

Furniture and Accessories

For viewing only. Please do not sit on furniture at any time or handle the furnishings in the home without express approval from the internal staff of the home.

Bathrooms

Portable toilets have been provided at all of the homes for your convenience. Bathrooms in the home are not for public use.

Children

Children are welcome at the Parade of Homes and 2 children under 16 may attend when accompanied by a ticketed adult. Please hold small children's hands in order to ensure the safety of the children and to protect the homeowners' belongings.

Pets

Please no pets in the homes, neighborhoods or your parked car.

Food and Drink

Please no food, drink, or gum on the premises of or in the Parade homes.

Security Monitoring

Security monitoring and recording may be in operation at some sites. Homes are being monitored for the safety and security of the home and attendees.

WHO WE ARE

Flathead Building Association

Established in 1978, our local building association has been a cornerstone of the community, exemplifying leadership and excellence. As trusted service providers, our members are committed to delivering the highest quality in the industry, continuously setting the standard for best practices and innovation. Our dedication to the community and unwavering pursuit of excellence makes our members the premier choice for all your building needs. Backed by the power of the triple alliance of the National Association of Home Builders (NAHB) and the Montana State Building Association (MBIA) and the Flathead Building Association (FBA), our members are vetted and supported locally, state-wide, and nationally.

The FBA is proud to bring you the Home and Garden Showcase in the spring each year and now the return of the Parade of Homes each fall. We are also proud to support community partners like the Kalispell Student Built House Program. Our website, www.buildingflathead.com provides a directory listing of all our members. Search by category and find everything you need in one spot. Also listed is information about our events, the benefits of membership and Builder Connect, a service to connect potential clients to our builder members.

The next time you hire a professional to do work on your home, choose a local business and make sure they are a Flathead Building Association Member.



Mark Freidline
Executive Officer

Flathead Building Association
40 2nd St. East, Suite 202
Kalispell, MT 59901
(406) 752-2422
www.buildingflathead.com

HIGH QUALITY
ELECTRICAL CONTRACTING



STAR
ELECTRIC

#1 Best
Electrician



STARELECTRICMT.COM

406.752.0494

@STARELECTRICCO



“Where Quality Is The Standard”

(406) 319-2555 | 201 2nd St. East Polson
stutzmansfurniture.com

Amish Crafted Solid	Outdoor Poly	Custom Orders
Hardwood Furniture	Furniture	Welcome

508425

Precision Stonework

We are the Countertop Specialists
(406) 751-4002



Granite, Quartz, & Natural Stones
Ask us about restoring your kitchen countertops
www.precisionstoneworkmt.com



**MADE FOR MONTANA'S
HARSHEST OF CLIMATES.**

Spas • Swim Spas • Chemicals
Factory Trained Techs • Full Service



**THE PERFECT POOL 365 DAYS A YEAR
THE WORLD'S ONLY
SELF CLEANING SWIM SPA!**

406-257-7317
170 7th Ave. W.N.
Kalispell

**TUE-FRI 8 - 5:30P.M.
SAT 8:30 - 5:30P.M.
CLOSED SUN & MON**

Sundance® Spas

MASTER THE ART OF RELAXATION

*More than a Spa,
It's a Way of Life!*



Celebrating 50 Years of Sales & Service in the Flathead

166-003

PAVEGO.

Give us a call today
for a free Estimate!

406-752-0051

office@pavecomt.com
www.pavecomt.com

**RESIDENTIAL AND COMMERCIAL
We Can Cover All Your
Gravel & Asphalt Needs**

- Driveways
- Parking Lots
- Roads/Potholes
- Asphalt Repair
- Landscape Rock



Fidelity National Title

*By recognizing
the best in Montana,
we have assembled
an elite title & escrow team.*

FNT BIGFORK
8000 MT HWY 35, Ste 3
Bigfork, MT 59911
406-837-8000

FNT COLUMBIA FALLS
734 9th Street West Unit 5
Columbia Falls, MT 59912
406-862-7914

FNT HAMILTON
1920 North First Street
Hamilton, MT 59840
406-363-7004

FNT KALISPELL
150 1st Ave., WN Ste A
Kalispell, MT 59901
406-755-7004

FNT LAKESIDE
7100 US HWY 93 South, Ste A
Lakeside, MT 59922
406-300-6106

FNT MISSOULA
320 West Broadway St
Missoula, MT 59802
406-728-1500

FNT WHITEFISH
284 Flathead Ave, Ste 101
Whitefish, MT 59937
406-862-7914

**CONTACT US TODAY FOR
YOUR SUCCESSFUL CLOSING.**

FNTMontana.com



OVER 30 YEARS
SERVING THE
VALLEY!



RIVERSIDEGARAGEDOORS.COM

**NEED A GARAGE DOOR?
406-752-6505**



ROCKY MOUNTAIN



TILE & STONE

HARDWOOD ■ LVP ■ CARPET

1505 BAKER AVE WHITEFISH, MT 59937
(406) 862-2500 WWW.RMTILEANDSTONE.COM



Photos by: Longview Studios



LENNOX

Flathead Valley's Premier Dealer

CENTRAL
HEATING • COOLING • PLUMBING • ELECTRICAL

406-756-6656
www.centralmt.com

One Call!
Now That's Convenient.

- SALES
- SERVICE
- INSTALLATION



***ASK ABOUT
LENNOX REBATES**

164191



S O U R C E L I G H T I N G



YOUR DAY JUST GOT BRIGHTER

Helping to bring your lighting vision to life is our commitment at Source Lighting. Our designers make choosing your lighting a smooth and simple process. Contact us today if you would like to schedule an appointment or have any questions.

406-752-2424 | www.mtsourcelighting.com

PLANNING & DEVELOPMENT
WATER & ENVIRONMENT
INFRASTRUCTURE

Strengthening our
communities through
insightful design.



Moloney Insulation MONTANA

We Provide The Best Insulation Services

Fiberglass batts ~ Fiberglass blow-in ~ Closed cell spray foam

New construction, custom homes, tract homes, multi-family, apartment complexes, garages, pole barns, and much more.

406-219-7555
moloneyinsulation@gmail.com
moloneyinsulation.com

Book a free estimate with Moloney Insulation today!

Evergreen Disposal

Proudly serving Northwest Montana for over 50 years!

Providing safe, reliable, and friendly WASTE COLLECTION SERVICES to Flathead and Lincoln County Homes, Businesses, Construction Projects, and more...

(406) 257-1739
EvergreenGarbage.com

GLACIER POWER SOLUTIONS

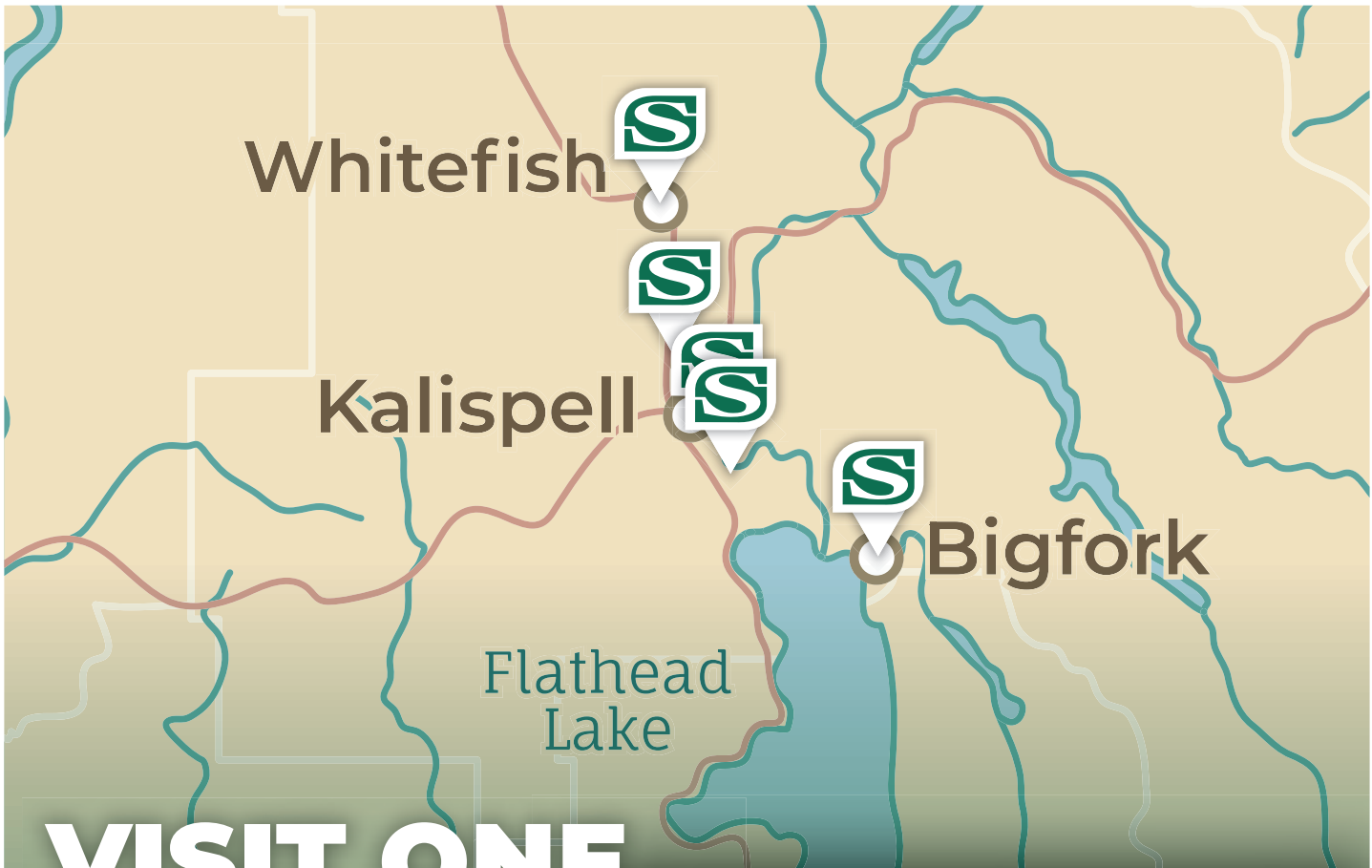
STANDBY GENERATORS

SOLAR ENERGY

OFF-GRID POWER SYSTEMS



406-892-1234 | glacierpowersolutions.com



VISIT ONE OF OUR 5 FLATHEAD VALLEY LOCATIONS



Stockman Bank

8165 Montana Highway 35 | Bigfork
2405 US-93 North | Kalispell Hutton Ranch
1 South Main Street | Kalispell Main
1825 US-93 South | Kalispell South
6588 Highway 93 South | Whitefish

PRICE RANGE CATEGORIES

ATTAINABLE

\$300,000-\$749,000

LUXURY

\$750,000-\$1,999,000

DREAM

\$2,000,000 and up

ATTAINABLE

Edge LLC

"The Dorado"
1368 Morning Eagle Dr,
Kalispell, MT 59901

Terry Homes, Inc.

"The Zoey – Townhome"
79 Hidden Buck Ct,
Kalispell, MT 59901

Terry Homes, Inc.

"The Lamberson – Single Family"
529 Pheasant Ln,
Kalispell, MT 59901

LUXURY

Old Montana Building Co.

"The Retreat"
1628 Whitefish Village Drive,
Whitefish, MT 59937

Stonegate Builders

"Bear Meadow"
14551 Bear Meadow Ln,
Bigfork, MT 59911

Northwest Montana Builders

"The Wyatt"
111 Blacktail Loop,
Lakeside, MT 59922

Westcraft Homes

"The Spruce"
127 E Monture Ridge,
Kalispell, MT 59901

DREAM

Malmquist Construction

"Hollman Hiway"
86 Orion Dr,
Whitefish, MT 59937

Skyline Builders

"Monegan Dream Home"
406 Monegan Rd,
Whitefish, MT 59937

TCG Montana

"Overlook"
Shuttle available from
7240 US Hwy 93 S
Lakeside, MT 59922

INTRODUCING An Original Floor Plan

from Westcraft Homes



More original home designs are coming to our next phase
in Silverbrook Estates: Riverside North.

Our new modern designs integrate comfortable designs with sophisticated style.

Simple. Elegant. Modern.



NEW MODEL OPENING SEPTEMBER 13

127 E Monture Ridge, Kalispell

Hours: Fri-Mon • Noon-4pm

406.885.6081 • www.westcrafthomes.com



YOUR
HOMEOWNERSHIP
JOURNEY
**STARTS
HERE**



NMLS# 472212



DRIVING DIRECTIONS

IMPORTANT: Homes are new construction and most are not on online mapping services. Please use the following driving directions to locate homes. Please follow instructions and signage for parking.



Edge LLC
“The Dorado”
1368 Morning Eagle Dr,
Kalispell, MT

From N. Meridian Rd., head west on Three Mile Drive. Follow the curve north onto Farm to Market Road. Take the first left (west) on to Mountain Vista Way. Continue west to Morning Eagle Drive. Turn right (north) on to Morning Eagle Drive. and continue north to 1368.



Terry Homes, Inc.
“The Zoey – Townhome”
79 Hidden Buck Ct,
Kalispell, MT 59901

From the junction of East Idaho Street (U.S. Route 2) and U.S. 2 East (Lassalle Road). Turn onto U.S. 2 East (north). Continue north on U.S. 2 East for about 3,500 feet. Turn left (west) on Hidden Buck Court (immediately after Glacier Ace Hardware). Continue straight (west) on Hidden Buck Court for about 900 feet. The home should be on your right at the start of the cul-de-sac.



Terry Homes, Inc.
“The Lamberson
– Single Family”
529 Pheasant Lane,
Kalispell

From U.S. 93. North on U.S. 93 toward Whitefish. Turn right onto Rose Crossing (You will see Kalispell Ford). Continue straight (east) on Rose Crossing for about

2,000 feet. Turn left onto Jefferson Blvd. (north). Continue straight on Jefferson Blvd. for about 2,000 feet. Turn right onto Pheasant Lane. The Lamberson, 529 Pheasant Lane will be on your right.



Old Montana Building Company
“The Retreat”
1628 Whitefish Village Drive,
Whitefish

From Whitefish, travel south on U.S. 93 towards Kalispell. At 1.9 miles from the traffic light at junction of Highway 40, turn right on Stelle Ln. Continue 0.6 miles and turn left up Whitefish Village Drive. The home will be on the right at 1628 Whitefish Village Drive.

From Kalispell, travel north on U.S. 93 towards Kalispell. At 7.7 miles from the traffic light at Reserve Drive, turn left on Stelle Lane. Continue 0.6 miles and turn left up Whitefish Village Drive. The home will be on the right at 1628 Whitefish Village Drive.



Stonegate Builders
“Bear Meadow”
14551 Bear Meadow Ln,
Bigfork

From Bigfork: Head south on Montana Hwy 35 to the village of Woods Bay. Approximate parking location is at 15321 Montana Hwy 35. Find street parking along Hwy 35 and look for signs to the shuttle. Shuttle will take guests on a 3-minute drive to the house.



Northwest Montana Builders/Tatanka
“The Wyatt”
 111 Blacktail Loop
 Lakeside

From Kalispell, go south US 93. Turn right on Bierney Creek Road. In approx. 0.4 miles, turn left onto Grayling Road. In approx. 0.4 miles, turn right onto Blacktail Road (go through Tatanka gate). First house on the right.



Westcraft Homes
“The Spruce”
 127 E Monture Ridge,
 Kalispell

Starting in Kalispell, take U.S. 93 North to Silverbrook Drive, turn left (west). Follow Silverbrook Drive to E Monture Ridge and turn right (NE). Home is 4th house on the left: 127 E Monture Ridge.



Malmquist Construction
“Hollman Hiway”
 86 Orion Dr,
 Whitefish

Driving directions from Whitefish. Head West on 2nd St. towards Spokane Ave. Turn right on Baker Avenue. Continue to

Wisconsin Avenue and then East Lakeshore Drive. Turn right onto Big Mountain Road. Turn left onto Elk Highlands Drive. Turn left onto Orion Dr. Destination will be on the right.



Skyline Builders
“Monegan Dream Home”
 406 Monegan Rd,
 Whitefish

From U.S. 93 take JP Road light (Don K/ Glacier Bank) and proceed over bridge onto Monegan Road. Home will be on the south side.



TCG Montana
“Overlook”
 Shuttle available from
 7240 US Hwy 93 S
 Lakeside

From Kalispell take U.S. 93 South to Lakeside. Turn right and park in the lot at 7240 US 93 S., just south of Adams Street and the Lakeside Community Chapel. A shuttle will transport people to Overlook (approximately 8 minutes from the parking lot). Parade tickets must be validated prior to boarding the shuttle.



YOUR HOMEOWNERSHIP JOURNEY STARTS HERE



GLACIER BANKSM

NMLS# 472212



MEMBER FDIC



VIP BUS TOUR & AWARDS NIGHT

Get ready for an exclusive evening at this year's Parade of Homes! We are thrilled to introduce our brand-new VIP Bus Tour & Awards Night, a unique opportunity to get a private preview of this year's homes, all while enjoying the convenience of being driven around on our luxury buses.

Our VIP Bus Tour is not just about viewing beautiful homes; it is about experiencing them. Enjoy refreshments on board as you travel in style from one exquisite location to the next. The evening promises a relaxed and intimate atmosphere, perfect for networking with fellow home enthusiasts and industry professionals.

The excitement doesn't end with the tour. Following the private tour of these homes, join us for the highly anticipated Awards Night After Party. This event will celebrate the outstanding achievements in home building and design. Enjoy music, delicious food, and a festive atmosphere as we honor the best of the best in the industry.

Awards will be presented in various categories, highlighting the exceptional work and creativity that make this year's Parade of Homes truly extraordinary. It's an evening of celebration, recognition, and inspiration, and you won't want to miss it.

Whether you are a prospective homebuyer, an industry professional, or simply a lover of beautiful homes, the VIP Bus Tour & Awards Night is an event designed to inspire. Tickets are limited, so be sure to secure your spot for this exclusive evening.

We can't wait to welcome you to the VIP Bus Tour Night and Awards Night After Party at this year's Parade of Homes!

For more information and to purchase tickets, visit our website at buildingflathead.com/parade-of-homes.

Hope to see you there!



KEY DETAILS

Date: Friday, Sept. 13, 2024

Time: 2:30 – 8:30 p.m.

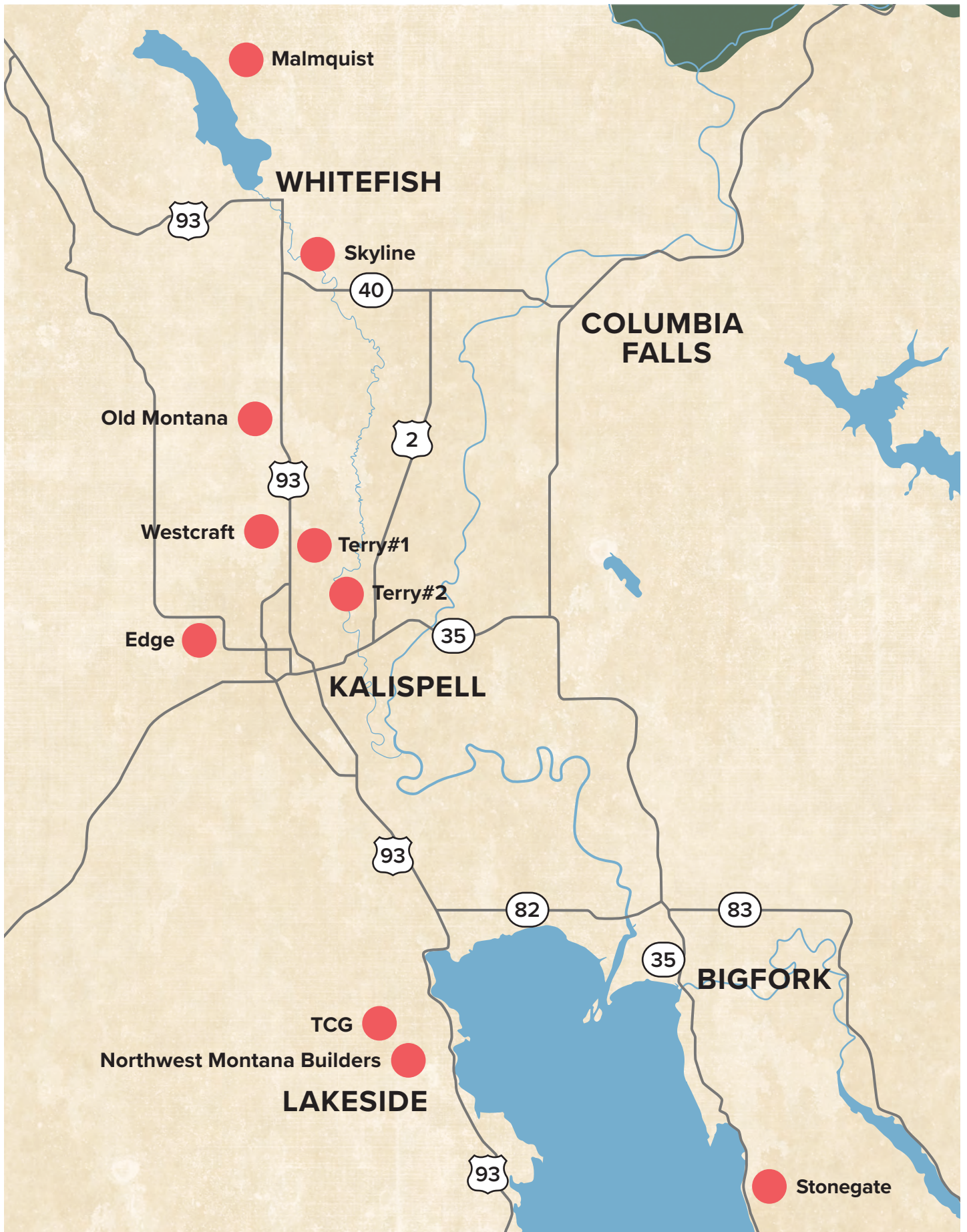
Location: Flathead County Fairgrounds
Expo Building

Tickets: \$65 per person

PURCHASE YOUR TICKETS TODAY!

Tickets available online at
buildingflathead.com/parade-of-homes

SPACE IS LIMITED!



The Dorado

Edge LLC



Edge LLC
55 Hunter Circle
PO Box 7184
Kalispell, MT 59904
(406) 756-7484
edgedevelopment-mt.com

Edge is a family-owned and operated builder/developer that originated in 2017 with the goal of providing quality residences at affordable prices. Edge capitalizes on teamwork and efficiency to provide the best value in Flat-head County.

The Dorado is a spacious three-bed and two-bath home with a large master suite and laundry room. The open kitchen/dining/living room has a vaulted ceiling. It also has a full-sized double car garage. Outside you'll find a front covered patio and a large back patio. Landscaping with irrigation is included.

1368 Morning Eagle Dr.

THE DORADO
Square foot living: 1,835
Bedrooms: 3
Bathrooms: 2
Garage: 2 cars
Price: \$355,000 base



SUBCONTRACTORS

- AKM Company
- Ambient Electric & Design
- Bain Irrigation
- Big Sky Concrete Works
- Builders First Source/BMC
- Costless Carpets
- CJ Drywall
- DJR Concrete
- Energy & Air Systems
- Flathead Electric
- First Interstate Bank
- Fred's Appliances
- Generation Design Construction
- Jackola
- Lowe's
- Mel Clark
- MiTek
- Montana Fence
- Moloney Insulation
- Mountain Stone Fabrication
- Northwester Energy
- Northwest Drywall
- Outlaw Concrete
- Paveco
- Peak Roofing Solutions
- Premium Cabinets
- Riverside Garage Doors
- Rock Creek Plumbing
- Selkirk Seamless Gutters
- Serio Transport
- Simp Flooring
- Sandry Construction
- Total Carpentry
- The Carpet Store
- WGM
- Western Building Center



Terry Homes, Inc.
7 Meridian Court
Kalispell, MT 59901
(406) 755-7516
terryhomesmt.com

Instagram: terryhomesmt1994
Facebook: Terry Homes

Ron Terry's journey into homebuilding began with humble roots and a strong work ethic. After gaining experience in various aspects of construction, from digging ditches to finish carpentry, Ron recognized his potential to construct homes independently. In 1994, fueled by determination and supported by family, he embarked on his first homebuilding project. Securing a homesite and a loan from family members, Ron took on every aspect of the construction process with dedication and hands-on involvement. From pouring concrete to framing walls and applying finishing touches, Ron's commitment to craftsmanship was unwavering. Alongside him, his wife Merna played an integral role, managing the financial side of the business with precision and care.

With the successful completion and sale of their inaugural home, Ron and Merna laid the foundation for what would become Terry Homes. Since those early

days, Terry Homes has grown into a family-owned company, with Merna Terry now leading the helm and their son, Miles Terry, learning the intricacies of running a family-owned homebuilding enterprise. Despite the growth and evolution, the core mission: to provide affordable quality homes for individuals who live and work in the Flathead Valley remain at the heart of Terry Homes' operations.

At Terry Homes, community and partnership are more than just buzzwords—they're deeply ingrained principles. Over the years, we've fostered long-term relationships and friendships with our trade partners and customers alike. These enduring connections are a testament to our commitment to our community and our unwavering dedication to excellence. Our homeowners can rest assured knowing that they're not just working with a homebuilder—they're partnering with a company that genuinely cares about their community and prioritizes lasting relationships.

529 Pheasant Lane



THE LAMBERSON
Square foot living: 1,579
Bedrooms: 3
Bathrooms: 2
Garage: 2 cars
Price: \$395,000

SUBCONTRACTORS

Adkins Painting
Builders First Source
Distinctive Countertops and Cabinetry
Ek Plumbing
Fred's Appliance
Heaton Electric, Inc.
Kimball Drywall, Inc.
MacArthur Company
McCrorie Heating & Cooling, Inc.
Rodda Paint
Sapphire Construction Services
The Flooring Spot



HOME DESCRIPTION

Welcome to The Lamberson, a beautifully designed three-bedroom, two-bathroom home spanning 1,579 square feet. As you step inside, you are greeted by a spacious entryway that offers easy access to a coat closet, a private laundry room, and an attached double-car garage for your convenience.

Experience the airy openness of The Lamberson with its open-concept design that seamlessly connects the kitchen, dining, and living areas. A vaulted ceiling in the living room en-

hances the sense of space, while a strategically placed window in the dining area allows natural light to gracefully illuminate the space, creating a warm and inviting ambiance.

The kitchen is a culinary haven, featuring a 7-foot-long island, an LG appliance package, and a thoughtfully designed pantry for optimal organization. The owner's suite is a tranquil retreat, complete with a walk-in closet (WIC) and a private bathroom, providing a perfect blend of comfort and functionality.

The Zoey

Terry Homes



Terry Homes, Inc.
7 Meridian Court
Kalispell, MT 59901
(406) 755-7516
terryhomesmt.com

Instagram: terryhomesmt1994
Facebook: Terry Homes

Ron Terry's journey into homebuilding began with humble roots and a strong work ethic. After gaining experience in various aspects of construction, from digging ditches to finish carpentry, Ron recognized his potential to construct homes independently. In 1994, fueled by determination and supported by family, he embarked on his first homebuilding project. Securing a homesite and a loan from family members, Ron took on every aspect of the construction process with dedication and hands-on involvement. From pouring concrete to framing walls and applying finishing touches, Ron's commitment to craftsmanship was unwavering. Alongside him, his wife Merna played an integral role, managing the financial side of the business with precision and care.

With the successful completion and sale of their inaugural home, Ron and Merna laid the foundation for what would become Terry Homes. Since those early days, Terry Homes has grown into a family-owned

company, with Merna Terry now leading the helm and their son, Miles Terry, learning the intricacies of running a family-owned homebuilding enterprise. Despite the growth and evolution, the core mission: to provide affordable quality homes for individuals who live and work in the Flathead Valley remain at the heart of Terry Homes' operations.

At Terry Homes, community and partnership are more than just buzzwords—they're deeply ingrained principles. Over the years, we've fostered long-term relationships and friendships with our trade partners and customers alike. These enduring connections are a testament to our commitment to our community and our unwavering dedication to excellence. Our homeowners can rest assured knowing that they're not just working with a homebuilder—they're partnering with a company that genuinely cares about their community and prioritizes lasting relationships.

79 Hidden Buck Court



THE ZOEY
Square foot living: 1,425
Bedrooms: 3
Bathrooms: 2
Garage: 2 cars
Price: \$338,000

SUBCONTRACTORS

Adkins Painting
Builders First Source
Distinctive Countertops and Cabinetry
Ek Plumbing
Fred's Appliance
Heaton Electric, Inc.
Kimball Drywall, Inc.
MacArthur Company
McCrorie Heating & Cooling, Inc.
Rodda Paint
Sapphire Construction Services
The Flooring Spot



HOME DESCRIPTION

Simple. Sweet. Single-Level Living.

The winning combo-quality built and affordably priced. The Zoey townhome will make Montana living easy and attainable through its excellent incorporation of everything you could need

in a home. This home's energy efficient HVAC system (including A/C), grants you the ability to relax in comfort year around while your home maintains the temperature you desire. Walk with ease throughout the main floor of your home on the amazing 100% waterproof, scratch and dent resistant, SPC flooring.

The Retreat

Old Montana Building Co.



Old Montana Building Co.
300 E Second Street Unit C,
Whitefish, MT 59937
(406) 871-6316
www.oldmt.com

Since 2004, the Old Montana Building Company has specialized in custom mountain homes. Inspired by mountain architecture, our homes feature native products such as timbers, stone, and reclaimed materials.

We are committed to constructing High Performance Homes, which means we build energy efficient homes designed to be sustainable and livable.

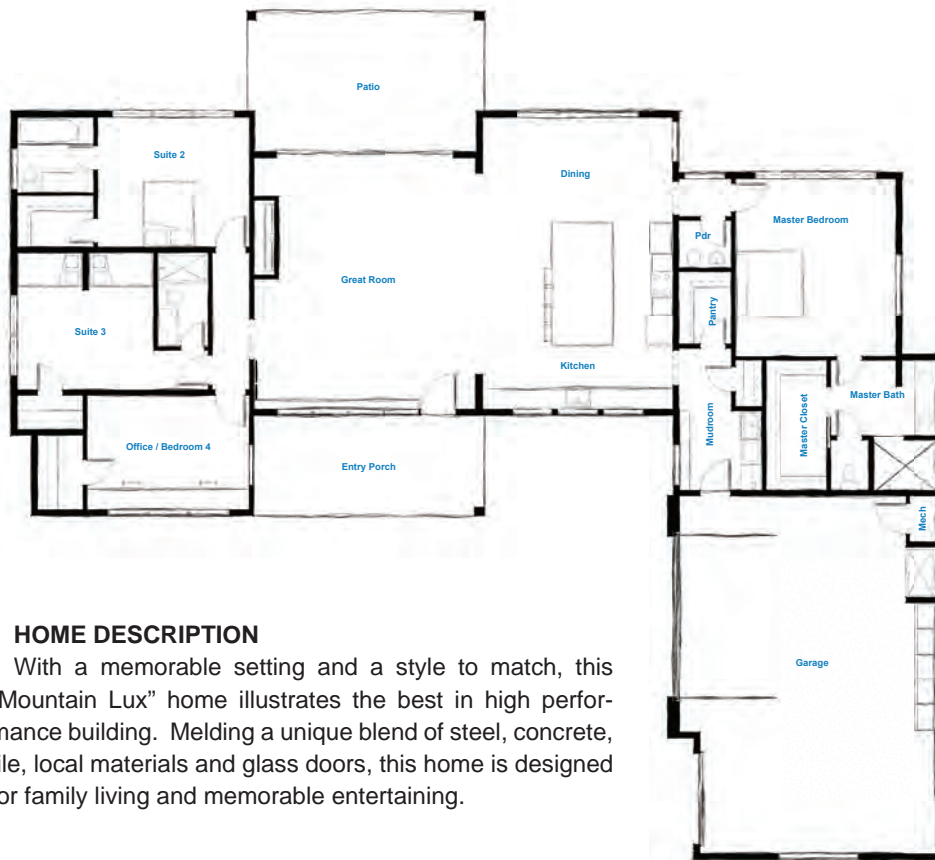
We've developed a concise way to describe what it's like to work with us and what makes us different.

We feel it's best summarized with this description: "People Who Care".

You'll see the energy, the creativity, and the commitment we put into our projects fulfilled in the homes we build. Every home is special, built with the consideration to detail and care it deserves.

1628 Whitefish Village Dr.

THE RETREAT
Square foot living: 3,200
Bedrooms: 5
Bathrooms: 4.5
Garage: 3 cars
Detached guest house
Price: \$1.5 million



SUBCONTRACTORS

- Above All Roofing
- Acutech
- Aluma Glass
- Anderson Woodworks
- Anderson's Masonry
- Aspen Landscape
- BMC
- Budget Blinds
- CM Quality Insulation
- CMT Fabrication
- Cost Less Carpet
- Dallas Gray Construction
- DJR Concrete
- Dupuis Lumber
- Empire Builders
- Ferguson Enterprises
- Fred's Appliance
- Glacier Stone Fabrication
- Hadlund Services
- Highline Metal Roofing
- Hodges Concrete
- Ideal Tile
- Joe Pyskaty Carpentry
- Kentor Mechanical
- Keri Wood Floors
- Laughlin & Son Drywall
- LBC Excavation
- Little Brother Window Cleaning
- Mike Black Construction
- Montana Rockworks
- Northern Stonework
- Overhead Door
- Pella Windows
- Preferred Painting Corp
- Premier Door
- RBM Lumber
- Rock Creek Plumbing
- Shepard's Glass
- Simco Electric
- Sliters Building Supply
- Snowghost Tech Outfitters
- WBC
- Yoder Cedar

HOME DESCRIPTION

With a memorable setting and a style to match, this "Mountain Lux" home illustrates the best in high performance building. Melding a unique blend of steel, concrete, tile, local materials and glass doors, this home is designed for family living and memorable entertaining.





Stonegate Builders
8560 Montana 35
Bigfork, MT 59911
(406) 260-0761
stonegatebuilders.com

John Stalowy is a Montana local custom home builder and expert contractor in the Flathead Valley, committed to excellence one project at a time. Stonegate Builders has been an in-demand general contractor since 1985.

In 2023 Stonegate partnered with Austin Simonson of Tamarack Builders to form a powerful alliance. Austin's expertise in construction methods and practices are right on par with the quality history of Stonegate, and his commu-

nication skills with clients and trades are outstanding.

Whether you are looking to build your Montana dream home, contract out a large-scale remodel or want to add on to your current home, we are here to guide you through the entire process. We build custom luxury homes in the Flathead Valley and the Northwest Montana and Western Montana areas.

Give us a call today to schedule your consultation.

14551 Bear Meadow Lane



BEAR MEADOW
Square foot living: 2,302
Bedrooms: 3
Bathrooms: 2
Price: \$1.1 million

SUBCONTRACTORS

Apex Excavating and Concrete
Aurora Star Painting
D3
Bald Rock Plumbing
BFS
Bighorn Custom Flooring
Brix Systems
Concrete Alternatives
Daunt Designs
DK ProBuilder
Direct Source Cabinets
Flathead Lake HVAC
Flooring America
Fred's Appliances
Glacier Hardwoods
Homestead Doors
JNC Construction
K2 Stone
Keller Supply
Montec Electric
Pella
Pinnacle AV
Rowen Architecture
SGB
Sherwin Williams
Signature Painting
Slick Finish Drywall
Sliters
Tamarack Builders
Tohle Excavating
True North Spray Foam
Western Building Center

HOME DESCRIPTION

Quality and thoughtful design are the hallmarks of this modest but mighty custom home in Woods Bay, perched on a private 5-acre lot overlooking Flathead Lake. Designed by Rowen Architecture with interiors by Daunt Designs, the vaulted great room, outdoor living space and primary bedroom take in stunning views from every angle. The home features three fireplaces for entertaining and indoor/outdoor living, with custom concrete hearth and mantel gracing the great room fireplace.

Stonegate Builders focuses on high efficiency craftsmanship, with construction highlights including spray foam insulation, 2x6 construction, ZIP system on exterior walls, Ice and Water Shield on the roof and Pella windows. The fireplaces are made with Isokearn liners to resemble a natural wood burning fireplace without the expense. The home is heated by hydronic heat in the floor and a forced air AC system including an HRV.

The home's design mixes rustic elements with a luxury resort feel, using organic materials such as wood, stone and concrete. A weathered kitchen island sets off lighter maple perimeter cabinets, with additional convenience items such as a wine refrigerator and pot filler. The primary bathroom is a light-filled, spa-like space with rift white oak cabinets, porcelain slab and maple-look wood slat tiled shower and a statement concrete tub with gold accents. The primary bedroom has a moody feel with a chocolate brown and black color palette, the better to set off the view framed by large windows.

The Wyatt

Northwest Montana Builders



Northwest Montana Builders

6090 U.S. 93 South #1
SOMERS, MT 59932
(406) 270-2948

info@TATANKAmontana.com

Welcome to Northwest Montana Builders, where over 50 years of collective experience meets unparalleled craftsmanship. Our dedicated team excels in transforming your vision into a stunning reality, from the initial design to the final build. With an in-house architect on our team, we ensure that every step of the process flows smoothly and efficiently, making your dream home come to life seamlessly.

At Northwest Montana Builders, we pride ourselves on providing top-level customer service before, during, and after your project. Our

commitment to excellence means you receive not only a beautiful home but a truly exceptional experience. We specialize in designing and constructing the finest homes in Northwest Montana, blending innovative design with durable quality to create spaces that are as unique as the landscape they're built upon.

Experience the difference with Northwest Montana Builders—where your vision, our expertise, and the rugged beauty of Montana come together to create homes that stand the test of time.

111 Blacktail Loop

THE WYATT
Square foot living: 3,302
Bedrooms: 4
Bathrooms: 3.5
Garage: 3 cars
Price: \$1.5 million

SUBCONTRACTORS

Belmont Cabinets
Ferguson
Flathead Roofing Pro's
Fox Electric
Harmon Crane
Home Pro/Foundations
Jacuzzi Tubs
Kohler Fixtures
McAthur Company
Meisner Drywall
Parking Lot Pros
Patriot Pumping
Robinson Tree Farm
Schillinger Construction
Shepards Glass
Sherman Williams
Stumptown Plumbing
Teton Lumber Company



HOME DESCRIPTION

Come home to Montana. Make it Legendary. Make it your Lifestyle. Make it Tatanka. Our first offering in this modern-yet-rustic, gated luxury community with lake views. Perched near the shores of the 27-mile-long Flathead Lake and nestled amid a forest of century-old ponderosa pines, a natural, peaceful community awaits.

Inspired modern and rustic style, the Model Home at 111 Blacktail Loop is a beautifully designed 5 bedroom, 4.5 bath home. TATANKA homes feature a stunning fireplace/media center, and a GE Profile Kitchen with two dishwashers. There are also two laundry centers, extensive outdoor living rooms, private offices, a SPA-like en-suite with steam shower, guest suites that sleep eight and three-car garages. With state-of-the-art "lock and leave" security and proximity to boating, shopping and dining.

At the threshold of year-round adventure and the coveted Montana lifestyle. Your legacy is waiting. This property is not to be missed! Make it Tatanka.

Please call Leah Lindsay at (406) 261-1859, Kayla Chamberlain at (406) 471-9693, or your real estate professional.



The Spruce

Westcraft Homes



Westcraft Homes

315 Parkway Drive
Kalispell, MT 59901
westcrafthomes.com

Facebook: westcrafthomes
Instagram: westcrafthomes

The Westcraft Homes' philosophy is simple: to craft creative Montana homes with unique features and exceptional quality, guided by our award-winning design, production, and service teams. With decades of experience, we don't just design and build homes; we create thriving communities.

We treat our customers and employees

like family, valuing their input and fostering a culture of listening and collaboration. We've been building in the Flathead Valley for 20 years and credit our longevity to our dedicated team of employees and subtrades. We are committed to enriching every community where we live and build, and we look forward to many more years of creating homes and communities together.

127 East Monture Ridge



HOME DESCRIPTION

A luxurious expansive two-story prairie-style masterpiece caters to the needs of modern families. This home is more than just a dwelling; it's a symphony of space, style, and functionality, where every room tells a story of comfort and sophistication. The enormous kitchen features incredible cabinetry, a colossal island, butler's pantry, and an additional walk-in pantry. Natural light floods the dining room and great room. The dramatic fireplace is a showstopper! The spacious mudroom off the three-car garage optimizes convenience. The first primary suite is a private sanctuary seamlessly blending practicality with opulence, complete with a luxurious bath and a convenient hookup for a stackable washer and dryer.

Upstairs, a second primary suite offers versatility and comfort for diverse living arrangements. Perfect for relaxation and entertainment, is the huge media room and storage closet with adjacent half bath. Three additional bedrooms, a full bath, and sprawling laundry room, provide ample space for guests or a growing family. Situated on a stunning lot with gorgeous views backing onto open space, this location is one of the prime Silverbrook Estates lots left in the first phases of this highly sought after community.

THE SPRUCE

Square foot living: 4,028

Bedrooms: 5

Bathrooms: 5

Garage: 3 cars

Price: \$1.4 million

SUBCONTRACTORS

Anderson's Masonry
Aqua Seal
Big Sky Appliance Installation
BSLI
Builder's Lighting
Budget Blinds
Casazza
Dayspring Restoration
Elemental Solutions
Energy & Air
Ek Plumbing
Ferguson's Appliance
Flooring America
Glacier Steel Products
Glacier Surveying
Granger Construction
Hersey Construction
Hung Well Drywall
John Hawver
Kalispell Copy Center
Keller Supply
Level Up Construction
Lilienthal Insulation Co.
Logic Lumber
MCH Construction
Meador Drywall
Midway Rental
Mission Valley Finish
Mike Miller Construction
Montana Fence
Next Level Exteriors
North Valley Steel
Northwest Crane
Northwest Drywall
Outlaw Concrete
Pride Painting
Riverside Garage Door
Scott Palmer, Tile work
Shepard's Glass
Star Electric
Stonecraft
The Flooring Spot
The Closet Guy
Valour Masonry
Water Works Lawn Care
Western Building Center

Hollman Hideaway

Malmquist Construction



Malmquist Construction

100 Baker Avenue
Whitefish, MT 59937
(406) 862-7846
malmquist.com

Instagram: malmquistconstruction

At Malmquist Construction, we understand that building is a journey of the heart, an expression of you. That journey is incomplete until the small things have been attended to, and the customer is fully satisfied. Choosing a partner who embraces your vision and has the knowledge to implement it is the crucial first step on your journey to crafting an expression of beauty, form, function, and practicality. Malmquist Construction is here to assist you on not only the first step, but every step of the journey. Over the years, we have found the essential components to achieving success: skilled and trustworthy people, open communication, and a fluid process. We balance an intricate business endeavor with artistic expression as we build a home unique to you and your loved ones. Malmquist Construction is committed to making your vision a reality.

Our team is diverse, and all have the education and/or experience to cover almost ev-

ery aspect of the building process. There is endless knowledge and strengths within our team to inspire everyone involved to deliver extraordinary results. Working with quality people and building quality projects is what each Malmquist team member was called to do. It's not about "going to work", it's about doing what we love to do every day and surrounding ourselves with positive people that make a difference in the lives of everyone involved. The relationship with our clients and team members is the foundation of the quest for excellence. Our dedication and commitment to delivering a quality product tends to create a magical bond with our clients and team members that results in a friendship lasting much longer than just the construction phase. When you partner with Malmquist Construction, not only will you get the home of your dreams, but you'll enjoy the journey along the way.

86 Orion Court



SUBCONTRACTORS

Designers

Hub City Architecture - Bobby Romano
Cooke Interiors - Barb Cooke
Northwest Design Studio

Vendors

A-Core Concrete Specialists
A+ Elevators & lifts
Able Roofing
Acucraft Fireplaces
Acutech LLC
Allure Gutters, Inc
Aluma Glass
Beaman Builders Inc
Benchmark Concrete Construction
Big Sky Finishes
Bison Hardwood, LLC
Casazza Concrete Inc
CM Quality Insulation Inc
Creston Electric LLC
Culligan Water Inc
Diamond Spa Inc
Earth Elements Design Center
Eclipse Engineering pC
Eldorado Climbing
Eyehear
Flathead County Solid Waste
Fred's Appliance
Generation Design Construction
Glacier Basin Builders
Glacier Factory Finishes
Glacier Hardwoods
Glacier Millworks
Great Northern Concrete Company
Great Northern Floor Coatings
Greenspace LLC
GS Crane Service LLC
Hamburg Homes
Harmon Crane & Rigging Inc
Hewn Elements, LLC
Hottshots
Inside Out Services
J&B Pool Services LLC
K&M Enterprises
LBR Plumbing
Legendary Finishes

Grizzly Custom Closets
MACON SUPPLY
Matson Trucking and Excavation Inc
Men at Work
Midway Rental
Montana Basement Solutions
Montana Crane Services
Montana Fire Pits
Montana Roof Worx LLC
Morris Services Inc
Mutual Materials
Nature's Best Custom Doors Inc
Nelson's Ace Hardware
North Valley Steel
Northwest Parts and Equipment
Northwest Pipe Fittings
Old Goats
Ozegovich Plastering Inc
Pacific Steel & Recycling
Padgham Woodworking Inc
Preferred Painting Corp
Professional Flatworks LLC
Purchase Green
Republic Services
Rocky Mountain Tile
RoofOps
Saunafin Saunas and Steam Baths
Schuman Construction
Shepherd's Glass Inc
Shipshape Carpentry LLC
Solid Iron
StoneCraft
Sunbelt Rentals Inc
Sunlighten
Sunset Pools & Construction
The Big Door Company
Tomi Peterson
Treasure State Masonry
Universal Mechanical
Vintage View
WBW LLC
West Masonry LLC
Western Building Center
Western States CAT Rental
Wise Choice Garage Door
y-knot
Yoder Cedar Works

HOLLMAN HIDEAWAY

Square foot living: 10,320

Bedrooms: 5

Bathrooms: 6.5

Garage: 4 cars

Price: \$8.5 million

HOME DESCRIPTION

This contemporary modern home is a masterpiece drawn by Robert Romano at Hub City Productions LLC out of Dallas Texas, and interiors designed by local Barb Cooke of Cooke Interiors. Together they created a statement home that pairs sophistication and elegance that exudes Montana to its core. The site planning and landscape design were done by Northwest Design Studio who perfectly integrated the house into Chair 3 at the top of Big Mountain.

This is the highest house above sea level in the Flathead valley. It is a spectacular home situated at the top of Elk Highlands and Northern Lights development with stunning views of Big Mountain, Whitefish Lake, the Columbia Range, Glacier National Park and the surrounding area.

Designed with entertaining in mind, the main level features floor to ceiling windows and large automatic sliding doors to seamlessly integrate the indoor and outdoor living spaces. When you walk in, you are dazzled with the grandeur of the space that seamlessly frames the beautiful mountains beyond. The floor to ceiling porcelain slab fireplace, lighted bar and wine room, hidden entertainment room, and climbing wall all add unique and personal touches to the home. The rest of the house showcases bold, dramatic and modern design elements that add to the sophisticated yet playful nature of the house. Through the underground garage, you are led to the back of the house which sits at the edge of the ski slopes for a true ski-in ski-out mountain home. In the summer you can enjoy the outdoor pickleball court and ample back deck set up for entertainment that includes a glass hot tub and large outdoor kitchen. This house is truly a work of art.



Skyline Builders

807 Spokane Avenue
Whitefish, MT, 59937
(406) 284-5337

skylinebuildermt.com
Instagram: skylinebuildersmt
Facebook: skylinebuildersmt

Skyline Builders is a cornerstone of the Flathead Valley, boasting a rich history spanning over four decades. Under the stewardship of owner Ryan Scott, the company has solidified its reputation for crafting exceptional, enduring homes. With a deep-rooted commitment to the community, Skyline Builders operates as a family-owned business, infusing every project with a personal touch. Their unwavering dedication to building high-quality homes, designed to stand the test of time, is matched only by their commitment to transparency and fos-

tering lasting relationships with clients.

From the ground up, Skyline Builders is committed to building more than just houses; they construct homes that become cherished legacies for families. With an open and honest approach, the company prioritizes clear communication and collaboration with clients throughout the entire building process. This foundation of trust has been instrumental in Skyline Builders' enduring success and their position as a trusted partner in realizing clients' dream homes.

406 Monegan Road



MONEGAN DREAM
Square foot living: 6,400
Bedrooms: 4
Bathrooms: 6
Garage: 3 cars
Price: \$2.944 million

SUBCONTRACTORS

Cheff Excavation
ECS
Glacier Hardwood
Green Kat Photography
Nolan Custom Cabinets
Northwest Roofing Specialist
Pioneer Heating & Cooling
Rocky Mountain Plumbing and Heating
Seth Capon – Darkhorse Design Group
Skyline AV
Skyline Builders
Summit Tile Installations



HOME DESCRIPTION

Designed for both intimate family gatherings and grand-scale entertaining, the home boasts a sprawling open space that serves as the heart of the home. A fully-equipped bar stands ready to cater to any occasion, while a state-of-the-art golf simulator offers a unique and engaging pastime. The outdoor living area is an entertainer's paradise, providing the perfect setting for relaxation and socializing amidst stunning surroundings. Each bedroom has its own bath along with heated flooring. A true family home for a long time to come.





TCG Montana

2180 U.S. 2 West
Kalispell, MT 59901
(406) 284-1824
tcgmontana.com

Instagram: tcgmontana
Facebook: The Construction
Group Montana

TCG is built on relationships, attention to the finest detail, and the creativity of our team. We understand the great responsibility we are given to care for our client's investment, time, and vision.

We serve each customer to the best of our ability and work to capture their vision throughout the construction process. We believe that the details matter. This conviction is evident in the quality of our work and the care we take with every project. We pride ourselves on doing the right thing for the right reason and we'll

never settle for what is easy.

At TCG we know the importance of setting the tone for a successful project with intentional, organized planning. One of the most exciting parts of the construction process is helping our clients develop a vision for their site and structure.

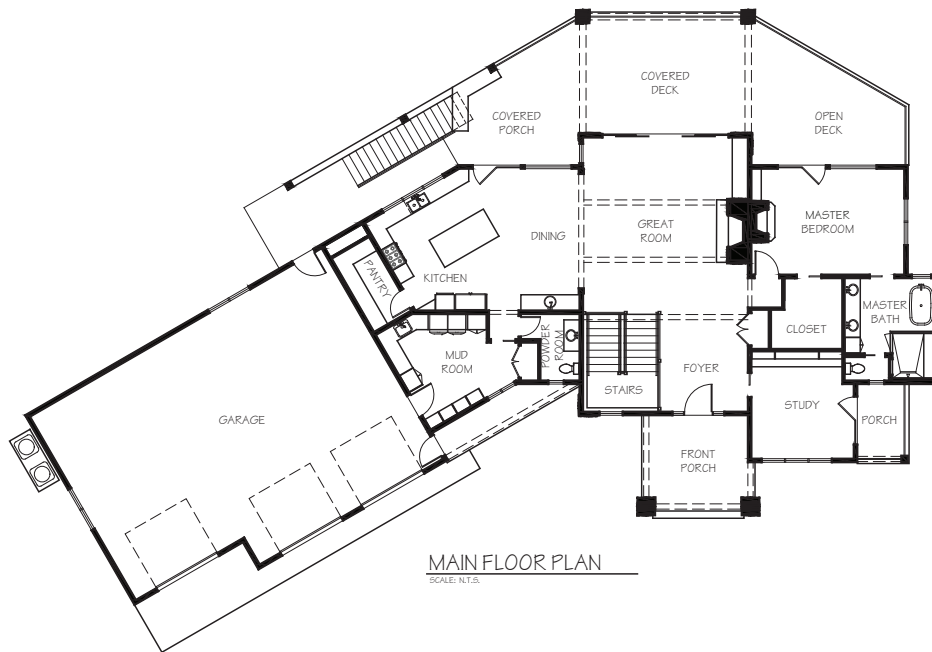
Equipped with a solid vision, our team of architects, engineers, surveyors, and interior designers work together to produce plans that will serve as the foundation for the project.

Lakeside

OVERLOOK
Square foot living: 5,070
Bedrooms: 4
Bathrooms: 4
Garage: 3 cars
Price: \$2.5 million

SUBCONTRACTORS

Aluma Glass
Artisan Concrete Works
Bass Electric LLC
Bartens Welding
Beck Cabinet & Casework Inc.
BMC/BFS - Chuck Tovey
DBA Jim Barber
Double J Roofing Inc
DK Probuilder
Fred's Appliance, Joseph McGee
Gibson Architecture
Glacier Plumbing and Heating
Glacier Stone Supply
Home & Office Accents
Legendary Doors and Millwork
MacArthur Co.
Masonry By Zeb Zahn
Rocky Mountain Tile & Stone
Sherwin Williams
Sliters
Stonecraft
Taylor Insulation
Water Mosaic
Young Guns Hardwood Inc.



HOME DESCRIPTION

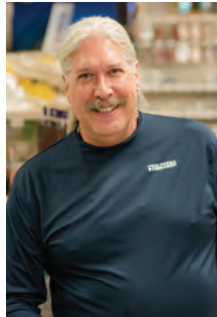
Overlook is an elegant home nestled on a southeastern slope in Lakeside. The main level features a large great room that flows seamlessly into the kitchen and dining area, showcasing the views throughout. The attached deck is partially covered and can be used to entertain any time of the year. Situated on the main floor is a deluxe master suite including a distinctive private office. Secluded from the rest of the home, a media room, three bedrooms, and two bathrooms can be found downstairs. A spacious patio extends from the downstairs and includes a hot tub and extra living space.



Rich



Luke



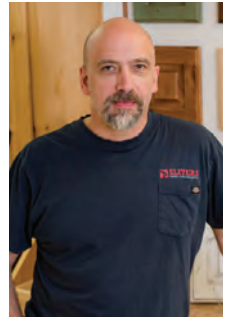
Jeff



Ken



Mardy



Jeremiah



Quality, Service, and Project Solutions You Can Count On

For over 90 years and standing the test of time, Sliters Lumber & Building Supply partnered with TimberTech to be Flathead Valley's **exclusive stocking dealer**. TimberTech decking provides the beauty of wood, yet is engineered for performance and longevity.

TimberTech decking resists fading and staining — and won't splinter, peel, crack, or rot. Your deck will look and perform beautifully for decades without the worry and maintenance of wood — all with industry-leading warranties!

Our experienced team members will help you explore colors, finishes, and materials to design your dream outdoor space. We look forward to helping you plan your project. Let's get started!



Patty



Chris



Shane



Bigfork: 406-837-5070
Somers: 406-857-3306
Lakeside: 406-844-2442
www.sliters.com

PARSONS TRACTOR

Built to work hard so
you don't have to.



Compact Tractors



Construction Equipment



Lawn Mowers



Utility Vehicles

2765 Highway 2 West | Kalispell, MT 59901

406-755-0628

www.parsonstractor.com

CityServiceValcon

Live Simply.

TRUST PROPANE HEAT
smart sustainable secure



CityServiceValcon.com 406.755.4321

17793

GLACIER STONE

KALISPELL, MT | EST. 2003

Discover the essence of Montana's charming character and beauty infused into every stone, let Glacier Stone Supply be your trusted companion in realizing your next project.

Speak with a Professional

406-885-1311

955 Whitefish Stage Rd. Kalispell MT

WWW.GLACIERSTONESUPPLY.COM





CHRISTIE'S
INTERNATIONAL REAL ESTATE

PureWest

**WHITEFISH
LAKE TEAM**
MONTANA

**Top 1% of Realtors
Nationwide**

Congratulations!

#1 TEAM IN MONTANA
in sales volume, awarded by Real Trends in 2023

#39 TEAM IN THE NATION
in sales volume, awarded by Real Trends in 2023

\$1B+ in sales volume over the last four years

\$275M+ sales volume with **115 CLOSED** transactions in 2023



Sean Averill
Regional Owner
406.862.4900
sean@purewestmt.com



Matt Buckmaster
Broker
406.261.8350
matt@purewestmt.com



CJAY Clark
Realtor
970.209.1050
cjay@purewestmt.com



Crystal Krause
Transaction Manager
406.863.0191
crystal@purewestmt.com

401 Baker Avenue, Whitefish, MT 59937 | 406.862.4900 | purewestrealestate.com




**A-1
SANITATION**

IS IT TIME TO SCHEDULE A SEPTIC TANK PUMPING?

Septic tanks should be pumped
every 3-5 years
so contact us today to get scheduled!

 **406-755-3938**

 **A1SanitationMT@gmail.com**

 **A1SanitationMT.com**

 **@A1SanitationMT**

 **facebook.com/A1SanitationMT**



First Montana Bank
Montana's bank. Since 1913.

FirstMontanaBank.com 

...because banking should be like a walk in the park

Whether it's a home mortgage or commercial loan, we think your experience should be, well, kind of like a walk in the park!

Kristen Hook 406 751 1731
Home Mortgage Specialist

Pierre Kaptanian 406 751 1740
Market President & Commercial Lender



85 N Main Street, Kalispell Montana

GRAND PRIZE \$1,000 SHOPPING SPREE!

Sponsored by Whitefish Credit Union

HERE'S WHAT YOU DO

- Visit at least 6 of the 10 home locations and have your ticket punched at each one.
- Fill out the back of your ticket with your contact information.
- Only one ticket per person is eligible in the drawing.
- Drop your ticket in the grand prize box at any of the Parade Homes by Saturday, Sept. 14, at 6 p.m.
- Winner will be chosen the following week by random drawing.
- Prize can be spent at one or a combination of FBA member businesses with a total cost of \$1,000.
- Complete rules are available at any Parade Home ticket table during the event.

2024 PARADE OF HOMES

FLATHEAD BUILDING ASSOCIATION

Must be 21 years of age or older to win.

Flathead homeowners' #1 choice for loans.

Discover why at WhitefishCU.com



Equal Housing Opportunity. Not all will qualify.
Subject to membership eligibility.



KALISPELL TRUSS



**FAMILY OWNED
AND OPERATED!**

- Free Quotes
- Fast Service
- We Deliver

SERVICES OFFERED:

- Custom Home Trusses
- Roof Additions
- Shop or Garage Trusses

We make building your dream home, custom addition, shop or garage easy. Call us today for a free quote and let us take the worry out of ordering Trusses. Serving Kalispell, Whitefish, Columbia Falls, Bigfork, Lakeside and surrounding areas.



PHONE: 406-755-2703
FAX: 406-755-4173
185 AUCTION ROAD
KALISPELL, MT 59901
KALTRUSS.COM



TURNING DREAMS INTO REALITY

Whatever your needs, full house design, renovations, additions, exterior improvements, or Project Management C2 Enterprises is here to help.

A Veteran Owned Design-Build Company

(406) 314-1446 | c2enterprisesmt.com



ACCLAIM
REPLACEMENT WINDOWS
EXCLUSIVELY FROM RENEWAL by ANDERSEN

20% OFF EVERY WINDOW, PATIO OR ANY DOOR



ENSEMBLE
— ENTRY DOORS —
EXCLUSIVELY FROM RENEWAL by ANDERSEN

NO MONEY DOWN
NO INTEREST
NO PAYMENTS
FOR 12 MONTHS!



RENEWAL
by ANDERSEN
FULL-SERVICE WINDOW & DOOR REPLACEMENT
Proudly Serving Wyoming

PHONE: 406-206-9558 | WEB: RBAMONTANA.COM

Call for details. Minimum purchase of 3 required. Not valid with other offers or prior purchases. **W.A.C. Loans provided by GreenSky Trade Credit, LLC. ©2024 GreenSky Trade Credit, LLC. *Subject to credit approval. Interest is billed during the promotional period but all interest is waived if the purchase amount is paid before the expiration of the promotional period. Financing for GreenSky® consumer loan programs is provided by federally insured, federal and state chartered financial institutions without regard to age, race, color, religion, national origin, gender or familial status. "Renewal by Andersen" and all other marks where donated are trademarks of Andersen Corporation. ©2024 Andersen Corporation. All rights reserved. Some Renewal by Andersen locations are independently owned/operated. Offer may not be available in all areas. License Number available by request.

bullfrog
spas
Kalispell

Voted #1 Best Pool and Spa Store in the Valley!

Best Pool And Spa Store Of 2024



106 Frontage Park, Kalispell, MT 59901

60 Years Serving Montana Communities

LILIENTHAL INSULATION COMPANY



NAHB CERTIFIED GREEN PROFESSIONALS
RESIDENTIAL & COMMERCIAL

NEW & EXISTING CONSTRUCTION

INSTALLED & RETAIL

- Blown or Blanket
- Sprayed Urethane Foam
- Suspended Ceilings



TruTeam

DON'T FORGET, THANK A VET, EVERY CHANCE YOU GET!
22 WEST RESERVE DR., KALISPELL
www.lilienthalinsulation.com • 406-752-4756

QUALITY & EXPERIENCE



Hall Contracting specializes in the construction of custom, high end homes in Flathead County and surrounding areas.

We offer premier remodeling and new home construction.

Our main focus is to work with the client to create their dream home while providing exceptional service and a great experience!

IT'S TOP CRAFTSMANSHIP FOR A FAIR PRICE.

(406) 607-1696 | hallcontracting2021@gmail.com | hallcontractingco.com



TICKETING TERMS & CONDITIONS

In buying ticket(s) from the Flathead Building Association or an official Parade of Homes ticket outlet for the Flathead Valley Parade of Homes, (“we” “us” “our”) you understand and agree that:

- Your ticket(s) is/are valid only for the number of person(s), the date and the show time stated on its/their face(s).

- During your visit to the homes, you must retain your ticket(s) safely for punching at the ticket table of each home for entry.

- Lost tickets will not be replaced and your ticket(s) cannot be refunded or exchanged unless cancellation occurs as described below.

- Your visit to the homes is at all times subject to the Attendee Guidelines as follows:

- Attendees must comply with all posted signs for parking at the homes. The Parade is a self-guided tour.

- Homes will be open during Parade hours only.

- Attendees may visit as many homes as they like in any order they choose.

- Individual tickets will admit 2 children under 16 with a parent that purchased a ticket.

- Tickets will be punched at the door of each home each time you enter.

- NO STROLLERS. Small children must be hand-held.

- Absolutely NO FOOD OR DRINKS inside homes.

- PHOTOS are at builders’ discretion.

We reserve the right to alter the advertised arrangements for the Parade of Homes, cancel any specific home tour or time slot and/or close the

Parade of Homes without notice; AND in any such event (a) we shall not be liable to you for any loss of business, revenue, profits, anticipated savings or goodwill (whether direct or indirect) or for any indirect, special or consequential loss of any kind and in each case howsoever arising, even if you have advised us of the possibility of same; and (b) our maximum liability to you shall not exceed the total amount you paid for your ticket(s).

If your ticket(s) is/are re-sold or transferred for profit or commercial gain by anyone other than us or one of our authorized subagents, said ticket(s) will be void.

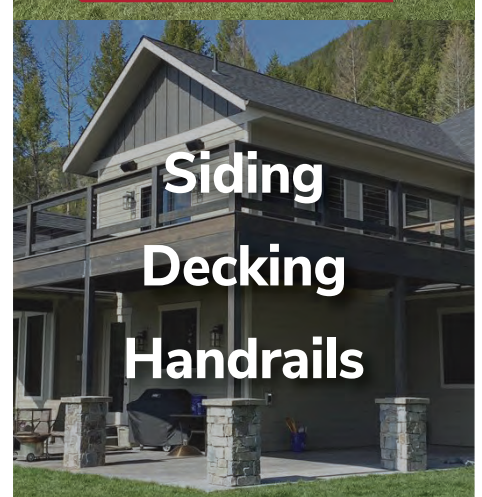
We have the right without liability to you to refuse to allow you to enter the Parade of Homes premises and/or escort you from our premises if you, in our judgment, breach any of these conditions or generate a risk to the safety and protection of the premises or people attending the event.

CANCELLATION

Should cancellation of the touring of a home(s), event, or any day of the event, be necessary, the Flathead Building Association will attempt to notify all customers who have purchased tickets in advance to arrange a refund of tickets. Contact will be in the form of notice on the www.buildingflathead.com website, so customers are advised to check this site before beginning their tour to avoid an unnecessary journey should an event or portions of the event be cancelled. We will also post notices at each home affected by the change in schedule. If an alternative visit date cannot be arranged, the Flathead Building Association will then refund the full price paid to customers.



Elevate Your Space
with Next Level
Exteriors LLC!



Siding
Decking
Handrails



Text or call
(406) 249-0194

Nextlevelexteriorsmt.com



**ANU
JAKKAM**

**REAL ESTATE
AGENT**

(406)-253-2847 (C)
(406)-752-8883 (O)
ANU@FVBMT.COM
1807 3RD AVE E,
KALISPELL,
MT 59901

LOOKING FORWARD TO HELPING YOU
ACHIEVE YOUR REAL ESTATE GOALS



GET MORE INFORMATION AT
ANUJAKKAMREALTY.COM

SCAN ME

FVB

FLATHEAD VALLEY
BROKERS

ReDEFINING REAL ESTATE



www.gibsonarchitecture.com

GIBSON ARCHITECTURE
P.O. Box 554
443 Osborn Ave, Suite 113
Bigfork, MT 59911
406-837-6898

SOLID IRON, LLC

**CUSTOM WELDING
& FABRICATION**



(406) 892-1499

**If you can dream it,
we can built it.**



Licensed ~ Insured ~ Certified

solidironllc.com



PROUDLY OWNED BY MONTANA NATIVE AND LICENSED ENGINEER



ROCKWATER
ENTERPRISES LLC

EXCAVATION

UTILITIES

SEPTIC Design + Install

406-404-7766

ROCKWATERMONTANA.COM

UPGRADE YOUR FLOORING!

in Kalispell, Montana



- QUARTZ FLOORS
- FLAKE FLOORS
- SINGLE COLOR EPOXY
- METALLIC EPOXY
- POLISHED CONCRETE
- GRIND AND SEAL
- WASH AND SEAL
- DECORATIVE OVERLAY
- AND MUCH MORE



CALL FOR FREE ESTIMATE **406-304-1413**

[greatnorthernfloorcoatings](http://greatnorthernfloorcoatings.com) | www.gnfloor.com

FBA MEMBER DIRECTORY

4 Ever Door
(406) 837-8888

4 Seasons Landscaping
(406) 207-0255

4 West Cabinetry & Wallbeds
(406) 755-8330

406 Docks
(406) 212-2409

4c Enterprises
(815) 560-2051

A&E Design
(406) 300-7535

A-1 Sanitation
(406) 755-3938

A-1 Vacuum & Janitorial Supply
(406) 755-1871

ABC Supply Co.
(406) 755-3388

Acutech Metalworks
(406) 892-4030

Advanced Roofing
(406) 752-6728

Aire Serv Heating
& Air Conditioning
(406) 837-6750

Alpha Technical Solutions
(406) 200-8330

Alsup Industries
(406) 314-5136

Aluma Glass
(406) 755-5234

American Bank
(406) 607-4440

American Electric
(406) 756-9473

American Garage Door
(406) 752-2662

Anderson's Masonry
Hearth & Home
(406) 755-2497

Appear Design
(406) 763-1972

Artisan Roofing & IDR
(406) 890-7663

Base Camp Spray Foam
(406) 871-7059

Bay Equity
(406) 609-4432

Big Cedar Construction Group
(406) 249-9324

Big Johns
(406) 257-7317

Big Mountain Builders
(406) 471-4112

Big Mountain Spa
Service & Sales
(406) 261-8202

Big Sky Insulations
(800) 766-3626

Bigfork Builders
(406) 837-3373

Birch Lake Construction
(406) 314-8926

Bishop Builders
(315) 939-0102

Bitney's Furniture
(406) 755-6033

Blakney and Sons
(406) 890-0604

Blind Guy
(406) 755-7525

Brody Broker Team Montana
(406) 300-2725

B's Montana Gardens
(406) 250-4950

Buckwalter Webb P
(406) 314-6444

Budget Blinds of Kalispell
(406) 752-1454

Build Magazine
(949) 275-5969

Builders FirstSource
(406) 752-9663

Bull Frog Spas of Kalispell
(406) 309-2596

Burnz Construction
(406) 471-0726

C2 Enterprises
(406) 314-1446

Cabinetry Concepts and Design
(406) 407-9229

Cam Clark Auto Group
(406) 755-2277

Capstone Construction
(406) 871-1993

Carbon Recall Kalispell
(406) 607-6500

Cecil James Enterprises
(406) 862-7846

Central Heating, Cooling,
Plumbing & Electrical
(406) 756-6656

Charles Warren, JD
Mountain Peak Wealth Solutions
(406) 909-0954

CityServiceValcon
(406) 755-4321

Coldwell Banker Landstar Properties
(406) 479-7509

Compass Chiropractic
(406) 863-2658

Compass Construction
(406) 862-8999

Copper Mountain Builders
(406) 471-1165

FBA MEMBER DIRECTORY

Cornerstone Builders MT
(406) 609-8890

CRB Design
(406) 471-0460

CrossCountry Mortgage
(406) 420-6355

Crowley Fleck PLLP
(406) 752-6644

CRS Renovations
(406) 580-5851

Culligan Water Conditioning
(406) 257-6936

CUTCO - Tara Michielli
(716) 790-7181

CUTCO Gifting - Bryant MacFarlane
(417) 612-3407

DA Davidson
(406) 751-5831

Daily Inter Lake
(406) 755-7000

Daunt Designs
(406) 224-4941

DaySpring Restoration
(406) 257-4911

DCI Engineers
(406) 318-9374

Dead Aim Construction
(406) 314-0980

Denman Construction
(406) 863-9925

Direct Source Cabinets
(406) 728-8099

Drawing Room Plans
(435) 674-2632

DRM Construction & Contracting
(406) 263-7011

DUCHATEAU
(503) 580-2482

Dudley's Trees
(406) 756-2565

Edge
(406) 756-7484

Edward Jones - John Danielson
(406) 756-0366

Edwards Painting Co.
(406) 609-1928

Eisenhart Builders
(406) 257-9395

Ek Plumbing
(406) 257-4316

Elevated Advisory and Accounting
(406) 800-1008

Elevation Roofing
(406) 249-7860

Elite Commercial Cleaning
(406) 885-5978

Elite Rustic Design
(406) 407-6487

Elle | Kole Interiors
(406) 886-8883

Encore Creations & Consulting
(406) 890-0260

Endpoint Utility Corp
(406) 884-2420

Escape Now Spas
(406) 862-0868

Evergreen Disposal
(406) 257-1739

Express Employment Professionals
(406) 257-2255

Eyehear
(406) 752-3536

Farmers State Bank
(406) 607-4240

Fathom Realty - Karen Wilde
(406) 334-6425

Ferguson
(406) 756-7630

Fidelity National Title
(406) 755-7004

Finmark Construction
(406) 253-6089

Firestone Concrete Coatings
(406) 531-7860

First Interstate Bank
(406) 883-8803

First Montana Bank
(406) 751-1731

Flathead Beacon
(406) 257-9220

Flathead Electric Co-op
(406) 751-4433

Flathead Insurance
(406) 752-8000

Flathead Premier Title
(406) 752-7000

Flathead Renovations
(406) 830-8249

Flathead Valley Brokers
(406) 253-2847

Fred's Appliance
(406) 257-3288

Freedom Bank
(406) 892-1776

Frontier Builders at Whitefish
(406) 730-1034

Glacier Bank
(406) 756-4201

Glacier Gate and Control
(406) 752-0892

Glacier Investment Management
(406) 890-7155

Glacier Power Solutions
(406) 892-1234

FBA MEMBER DIRECTORY

Glacier Roofing & Exteriors
(406) 303-3563

Glacier Steel Roofing Products
(406) 892-7525

Glacier Stone supply
(406) 885-1311

Glimm Homes
(406) 756-9052

Goosehead Insurance - Scott Countryman
(406) 703-3001

Goosehead Insurance- Mitchell Morgan
(406) 551-9483

Gotcha Covered
(406) 885-7310

Grand Welcome Glacier Country
(406) 296-4996

Great Bear Builders
(406) 752-8476

Hagestad Painting & Coatings
(406) 253-4976

Halcyon Homes
(406) 609-6800

Hall Contracting
(406) 607-1696

Heitmann Productions
(406) 871-5871

Heyob Construction
(406) 250-4934

Housing Whitefish
(406) 318-6890
HUB International of Montana
(406) 862-4481

Iconic Spray Foam
(406) 471-5481

Inside Out Services
(406) 871-9262

Insured Titles
(406) 755-5028

Integrity Electric Service
(406) 212-6707

InterBel
(406) 889-3311

International Wood Products
(208) 586-9701

Iron Gate Construction
(479) 586-0174

Iron Star Construction
(406) 309-2012

IVOVI Marketing
(406) 250-5096

J. Martin Builders
(406) 257-1792

James Home Improvements
(406) 885-5103

JCCS
(406) 755-3681

JCreative Website
& Graphic Design
(406) 300-5535

Jesco Metalworks
(406) 407-9810

K2 Stone Montana
(866) 722-2420

Kalispell Copy Center
(406) 755-5888

Kalispell Truss Center
(406) 755-2703

Keller Supply Company
(406) 300-4634

Keller Williams Realty NWMT - Tyler Clark
(406) 407-4062

Kevin Treece Custom Residential Design
(406) 752-7587

Knife River
(406) 752-2755

Kulprints
(406) 858-7768



MOORE
Craft LLC
General Contractors

Custom Homes & Structures • Property Development
406.885.9935 MooreCraftMontana.com
Tyler@MooreCraftMontana.com MT Contractor #267767

FIND YOUR INSPIRATION AT...



Cabinetry Concepts & Design

Inspired Design Layouts | High Quality Cabinetry
Over 30 Years Local Experience

723 5TH AVENUE EAST, STE #B36 | KALISPELL, MT
STUDIO 406.407.9229 | CABCONCEPTS@OUTLOOK.COM





FBA MEMBER DIRECTORY

Lake View Builders
(406) 609-8226

Larry's Tractors, Trailers, and More
(406) 892-3212

LC Staffing
(406) 752-0191

Lee Selders Construction
(406) 250-5337

Legendary Finishes
(406) 756-5463

Lemire & Company
(406) 314-7207

LG Electronics
(406) 250-3307

LHC
(406) 758-6400

Lilienthal Insulation
(406) 752-4756

Lone Tree Insurance
(406) 219-7650

LUXX Admin Solutions
(406) 212-1061

Made in the Shade NW Montana
(406) 578-8777

Malmquist Construction
(406) 862-7846

Mann Mortgage
(406) 751-6266

Marsh McLennan Agency
(406) 758-4200

Martel Construction
(406) 837-1063

Masterpiece Carpet One
(406) 752-0924

Masterwork Components
(406) 257-0700

Mattress Firm
(406) 577-6425

Meadowlark Log Homes
(406) 293-8707

Meridian Construction Company
(406) 626-2583

Midway Rental
(406) 758-1253

Milbrandt Building Company
(406) 253-5174

Mindful Designs
(406) 863-9177

Minot Builders Supply
(406) 761-7530

Mission Mountain Pre-Finish
(406) 212-7206

Montana Build
(406) 862-4975

Montana CAD
(406) 755-1155

Montana Helical Piers
(406) 755-2394

Montana Heritage Home Builders
(406) 892-1972

BREAK GROUND ON YOUR FUTURE

\$3,000 IN LENDER CREDIT¹

Wintrust Mortgage is offering \$3,000 as a lender credit when you sign a purchase agreement OR apply for a mortgage OR lock in rates between May 15, 2024 and December 31, 2024, on new-construction homes.

USE YOUR LENDER CREDIT TOWARD:

Closing costs • Discount point(s) for a lower rate • Mortgage insurance

ELIGIBLE PROPERTIES:

Spec homes • Model homes • New-construction condos • Custom/To-be-built homes

ELIGIBLE LOAN PRODUCTS:

Conventional conforming • FHA • VA • USDA

WINTRUST MORTGAGE

CONTACT US TODAY
TO LEARN MORE ABOUT
THIS SPECIAL OFFER!



DIRECT: 406-756-1505
20 FOUR MILE DR. STE. 1
KALISPELL MT 59901
WINTRUSTMORTGAGE.COM



Wintrust Mortgage is a division of Barrington Bank & Trust Company, N.A., a Wintrust Community Bank, NMLS #449042. ©2024 Wintrust Mortgage.

¹ Central Region New Construction Special 2024. Homes must be build/sold within the state of Montana. Only one credit per transaction.

FBA MEMBER DIRECTORY

Montana Rockworks
(406) 752-7625

Montana Roofing Solutions
(406) 871-9874

Montana Sash & Door
(406) 752-4527

Montana Trophy Homes
(406) 261-0129

Moore Craft
(406) 885-9935

Morrison Maierle
(406) 752-2216

Mountain High Construction
(406) 837-0605

Mountain River Construction
(406) 249-9914

Moving Montana
(406) 314-7762

My Glacier Village
(406) 250-8784

National Framing
(713) 903-5054

Noller Automotive Supercenter
(406) 609-4600

Northern Heritage Builders
(406) 909-0503

Northwest Drywall & Roofing
(406) 752-2644

Northwest Parts & Equipment
(406) 892-1778

Northwest Roofing Specialist
(406) 871-5840

Northwestern Energy
(888) 467-2669

NSL Seamless Gutters
(406) 499-1488

Nunlist Enterprises
(406) 261-6272

Old Montana Building Company
(406) 871-6316

One Trust Home Loans - Beth Tullis
(406) 479-7509

Paragon Build & Design
(406) 890-0940

Park Side Credit Union
(406) 863-1424

Parsons Tractor & Implement
(406) 755-0628

Patty Seaman Homes
(406) 755-5868

Pella Window & Door
(406) 257-1516

Performance Real Estate
(406) 559-2042

Plantland
(406) 756-7568

Precision Glass
(406) 471-9644

Precision Stonework
(406) 751-4002

Prestige Contracting
(406) 249-4841

ProRustics
(406) 291-2896

Pure West Real Estate - Kamy West
(406) 862-4900

PureWest Real Estate – Derek Joseph
(406) 607-5377

**FROM LAND LOANS TO
CONSTRUCTION LOANS, TO
CONVENTIONAL MORTGAGES, WE
ARE YOUR ONE-STOP SHOP FOR
RESIDENTIAL REAL ESTATE LOANS.**



Meridian Road Bank

552 N. Meridian Road
Kalispell, MT 59901
406-755-5432



Idaho Street Bank

233 E. Idaho Street
Kalispell, MT 59901
406-755-4271



Whitefish Location

6329 Hwy 93 S
Whitefish, MT 59937
406-862-2233

threeriversbankmontana.com

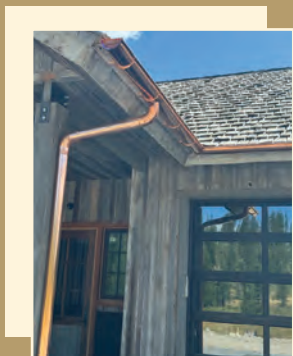


Member FDIC

Ask for **KASASA**

187486

Proudly serving the Flathead Valley for over 30 years.



ALLURE
GUTTER SYSTEMS, INC.
406-250-2654

We design and
install seamless
gutter systems for
any home.

*Excellent quality and craftsmanship
is what we aim for.*

Call today and get a free estimate
406-250-2654 or email us at alluregutter@yahoo.com

187874

Quality First Construction (406) 253-9864	Silver Creek Construction (406) 780-0898	TK3 Builds (504) 722-4171
Raincloud Productions (907) 491-0788	Silverline Cabinetry (406) 871-7755	Tradewerks Construction (406) 253-5328
RDO Equipment (406) 752-2828	Sky Vault (406) 471-3845	Trusted Gear Company (406) 309-6988
RE/MAX Glacier Country - Mark Beck (406) 261-6602	Skyline Builders (406) 425-4496	US Bank (406) 257-5363
Reed Painting (406) 250-4838	Sliters' Lumber and Building Supply (406) 857-3306	Valley Bank (406) 752-7123
Reum Custom Building (406) 250-0212	Solid Iron (406) 892-1499	Valley Glass (406) 257-9200
Rhino Excavation and Trucking (406) 885-1547	Source Lighting (406) 752-2424	Valley Landcare (406) 201-9222
Rich Restorations (406) 261-2563	SPC Asphalt (406) 837-3047	Valley Vista Properties (406) 257-8249
River Right Construction Management (406) 890-4004	Star Electric (406) 752-0494	Warburton Brokers - Keller Williams Realty NWMT (406) 270-8163
Rockwater Enterprises (406) 404-7766	Stillwater Services (406) 284-5457	Watson Excavating (406) 253-8051
Rocky Mountain Bank (406) 751-5070	Stockman Bank (406) 300-7800	Westcraft Homes (406) 257-8249
Rocky Mountain Tile and Stone (406) 862-2500	Stonegate Builders (406) 260-0761	Western Building Center (406) 755-6411
Rodda Paint (406) 890-4723	Strods Contracting (406) 551-5287	WGM Group (406) 728-4611
Roddie (406) 730-1565	Stumptown Heating & Cooling (406) 871-6731	Whitefish Credit Union (406) 862-3525
Ron Catlett Construction (406) 249-0163	Stutzman's Amish Crafted Furniture (406) 319-2555	Windermere Real Estate – Cory Mehl (425) 890-8828
RT Consulting (406) 407-7326	Sunrise Builders (406) 257-8114	Wintrust Mortgage (406) 756-1505
Sable Concrete Lifting (406) 471-9245	Swank Enterprises (406) 752-5411	Wood Roots Construction (406) 885-3244
Sapphire Construction Services (406) 260-3117	Synergy Electric (406) 261-0225	Xtreme Carpet Cleaning & Restoration (406) 471-1143
Saylor Construction (406) 250-5455	Talos (406) 253-5884	Y-knot Furniture & Cabinets (406) 889-5211
Schellinger Construction (406) 892-2188	Teak Construction (406) 210-2098	Young Bucks Irrigation (406) 260-3183
Seven Hills Construction (406) 552-0737	Terry Homes (406) 755-7516	Yukon Construction Group (406) 213-5151
Shepard's Glass (406) 755-4540	The Construction Group (406) 284-1824	
Sierra Pacific Windows (406) 755-4710	Three Rivers Bank (406) 755-4271	

CUSTOM STAINLESS STEEL & COPPER AQUATIC PRODUCTS

◆ RESIDENTIAL ◆ COMMERCIAL ◆ HOSPITALITY

- ◆ Spas ◆ Swimming Pools ◆ Glass-Walled Pools & Spas
- ◆ Energy-Efficient Portable Spas ◆ Swim Spas ◆ Cold Therapy Plunge Pools
- ◆ Tile-ready Pools & Spas ◆ Water Features ◆ Luxury Custom Indoor & Outdoor Bath Fixtures
- ◆ SPECIALIZING IN ELEVATED / ROOFTOP POOL & SPA INSTALLATIONS
- ◆ LIGHTWEIGHT & DURABLE



STAINLESS STEEL POOL WITH SUN SHELF, INTERIOR STAIRWAY,
BENCH SEATING ON SIDE WALLS OF POOL, SWIM-UP BAR, SWIM SPA SYSTEM,
LED LIGHTING, LAMINAR JETS & AUTOMATIC COVER



LANDSCAPE ARCHITECT: Outdoor Craftsmen
PHOTOGRAPHER: Jimi Smith Photography

TAKING AQUATIC ENJOYMENT TO A HIGHER LEVEL SINCE 1996

1.800.951.SPAS (7727) 720.864.9115 FAX 866.605.2358 diamondspas.com info@diamondspas.com

Make, use, save,
and sell your own
clean energy.



Solar Works in Montana

- ✓ Power Your Entire Home
- ✓ Generate Energy In Any Weather
- ✓ Get Backup Power During Outages



“

Working with Carbon Recall® Kalispell was an excellent experience. The crew made solar installation a breeze. Getting solar was a great investment. My favorite part about solar is it feels like all play, no work!

CHAD, HOMEOWNER



Rated 4.9+ stars by Carbon Recall® Customers

Get a free quote

406.607.6500

carbonrecallkalispell.com



DAILY INTER LAKE IS THE BEST DAILY NEWSPAPER IN THE STATE!

SAM GILLULY AWARD FOR THE BEST MONTANA DAILY NEWSPAPER

MONTANA NEWSPAPER ASSOCIATION AWARD FOR GENERAL EXCELLENCE

THE MEL RUDER PHOTOGRAPH OF THE YEAR: CASEY KREIDER

SUBSCRIBE TODAY!

Scan here



or call 406.755.7018



No One can Touch What We Offer in Our Square Foot Price in Quality, Affordability, Efficiency!

Team Park Place Proudly Represents These Builders in Montana & Washington!

Our Plan or Yours – Your Plan or Ours – We Want to Earn the Right to be Your Builders of Choice.



TANNINEN CUSTOM HOMES

N.W. Montana & Tri – Cities Washington Building Top Quality Custom Homes for Over 30 Years. Homes Starting at \$565,000



TUSCANY CUSTOM HOMES

Making Your Dreams a Reality Throughout Montana & Washington. 35 Years of Specializing in Custom Built Timber frame Structures!



FRAME TEC LLC

Builder of Quality Custom Homes and Commercial Buildings Throughout Montana! Our Goal is to Earn Your Trust & Confidence in the Building of Your Custom Home.



Paul "Digger" Heidegger 406-260-2567

paul.heidegger@exprealty.com



Jason Hatten 406-212-3309

jason.hatten@exprealty.com



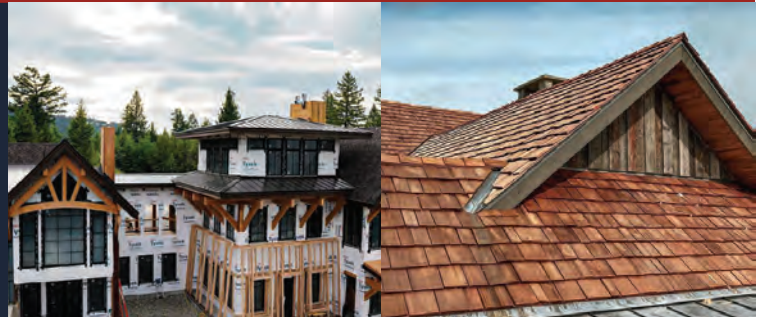
Gary Alexander 406-250-2410

gary.alexander@exprealty.com

406-253-7661 Office - 2858 Hwy 93 S, Kalispell, MT



187833



With Roof Ops LLC, we specialize in delivering premium roof installations that exude luxury and elegance. As a small, family-owned business, we pride ourselves on the personalized touch and meticulous attention to detail that sets us apart in the roofing industry.



(406) 491-8408
1867 Trumble Creek Rd
Kalispell, MT 59901
roofopsmt.com

187875



Once again, Trex® (NYSE: TREX), the world's #1 brand of high-performance, low-maintenance composite decking and railing, is revolutionizing outdoor living with the introduction of its latest innovation - Trex Signature® decking. This premium offering from the category inventor and industry leader pioneers a realistic woodgrain that raises the bar for beauty, performance, and sustainability.



Engineering What's Next
In Outdoor Living®



Find us on the web

<https://westernbuildingcenter.com>



Facebook



YouTube



Direct Source

from the warehouse to your house

160 Kelly Road, Kalispell, MT
 3495 West Broadway Ste A, Missoula, MT
 210 North 1st Ste D, Hamilton, MT
 406•728•8099
 DirectSourceMT.com



3495 West Broadway Ste B, Missoula, MT
 406•926•1920
 ImperialGraniteMissoula.com



Rich Sargent



Rebecca Babin-Sargent

OWNERS — DIRECT SOURCE
 IMPERIAL GRANITE & QUARTZ



Rocheal Gaston
 MANAGER & DESIGNER



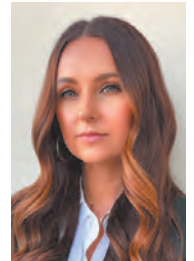
Dominic Garefino
 DESIGNER



Joey Lewis
 DESIGNER



Kaila Jackson
 DESIGNER



Phoebe Wood
 DESIGNER